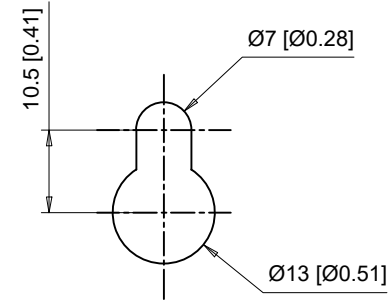
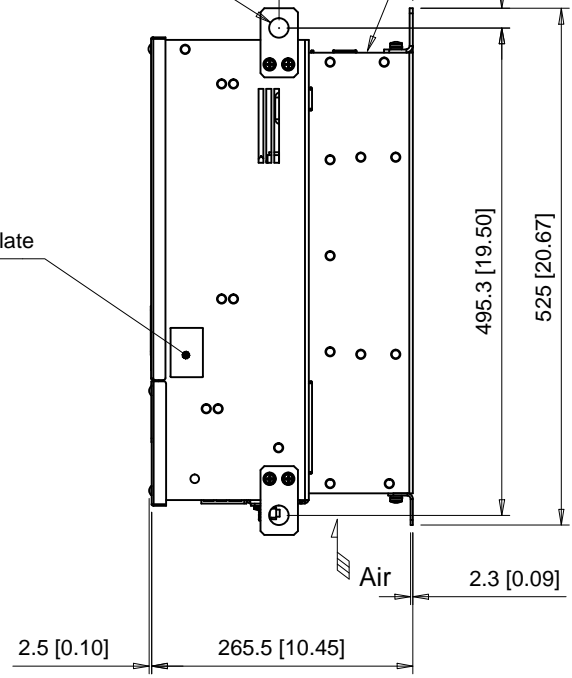


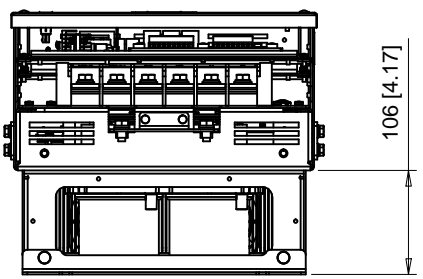
Note: Spreader bar required to avoid damage during lifting

(4)-Lifting Holes Ø20 [Ø0.79]

Nameplate



Detail A
Top mounting hole dimensions
Scale 1:1



C/C: SPBC-	INPUT VOLTAGE 1-PHASE (VAC)	OUTPUT CAPACITY (kW)	WEIGHT Kg (lb)	COOLING FANS	HEAT LOSS (W)		
					INT	EXT	TOT
2030□□□	230 TO 240	30	27 (59.5)	2	209	728	937
4037□□□	460 TO 480	37	26 (57.3)	2	185	724	909
4045□□□		45	26 (57.3)	2	199	782	981

□ denotes A-Z

INT=Internal Components
EXT=External Heatsink
TOT=Total

YASKAWA

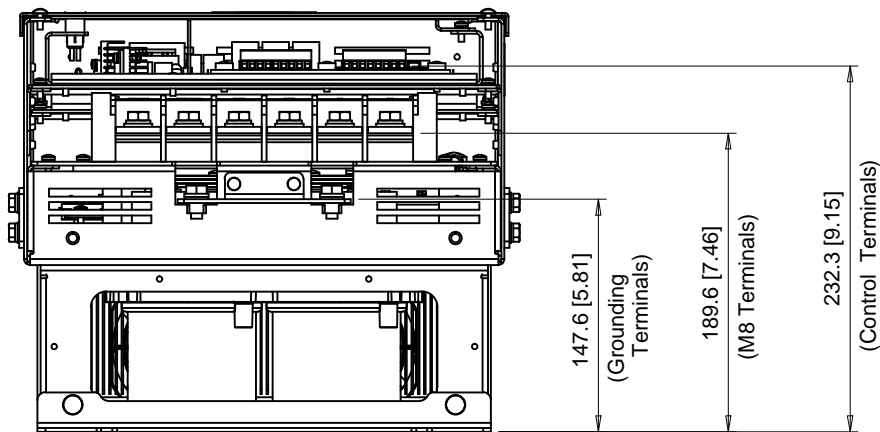
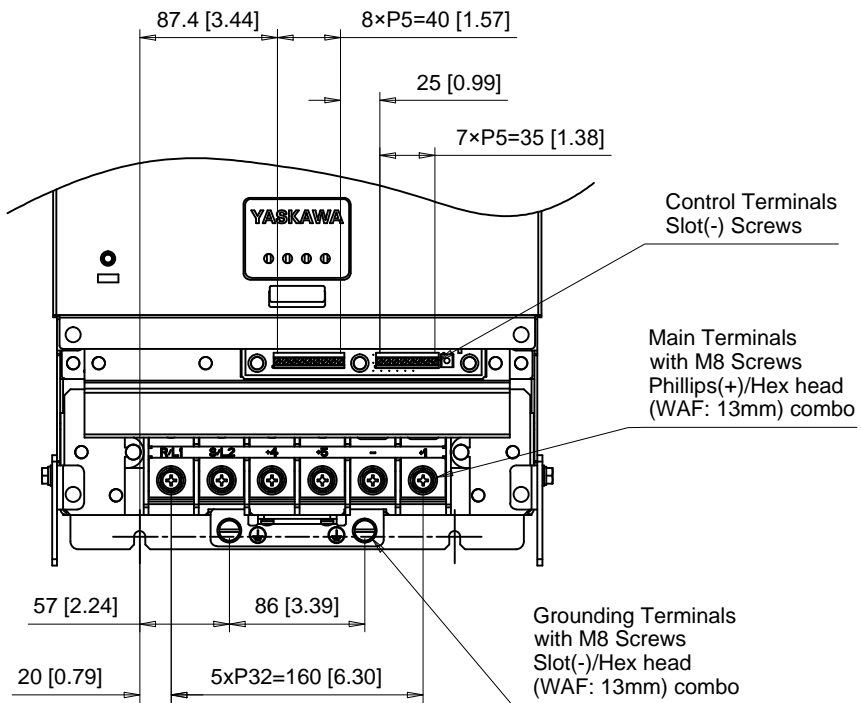
UNITS MM [IN]
SCALE 1:8

DRWN. J. MATTAS 7-25-17
CHKD. J. PIOTROWSKI 11-2-17
TECH. L. UDDIN 11-14-17
APRV. J. CAIRO 11-29-17

TITLE
SPBC DIMENSION DRAWING
FRAME SIZE 2
IP00 ENCLOSURE

SIZE A PAGE 1 OF 3
DWG.NO. DD.SPBC.FR2.IP00

REV 0

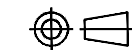


C/C: SPBC-	TERMINAL SYMBOL	WIRE RANGE AWG (mm ²)	TERMINAL SCREW	CLAMPING TORQUE N.m. (lb.in.)
2030□□□	R/L1, S/L2, +4, +5, -, +1	6 - 250 (13.3 - 127)	M8	9.0 - 11.0 (79.7 - 97.4)
4037□□□	⊕	4 - 2 (25 - 35)	M8	9.0 - 11.0 (79.7 - 97.4)
4045□□□				

□ Denotes A-Z

Note: Refer to applicable codes and standards for proper wire type and size.

YASKAWA



UNITS MM [IN]

SCALE 1:5

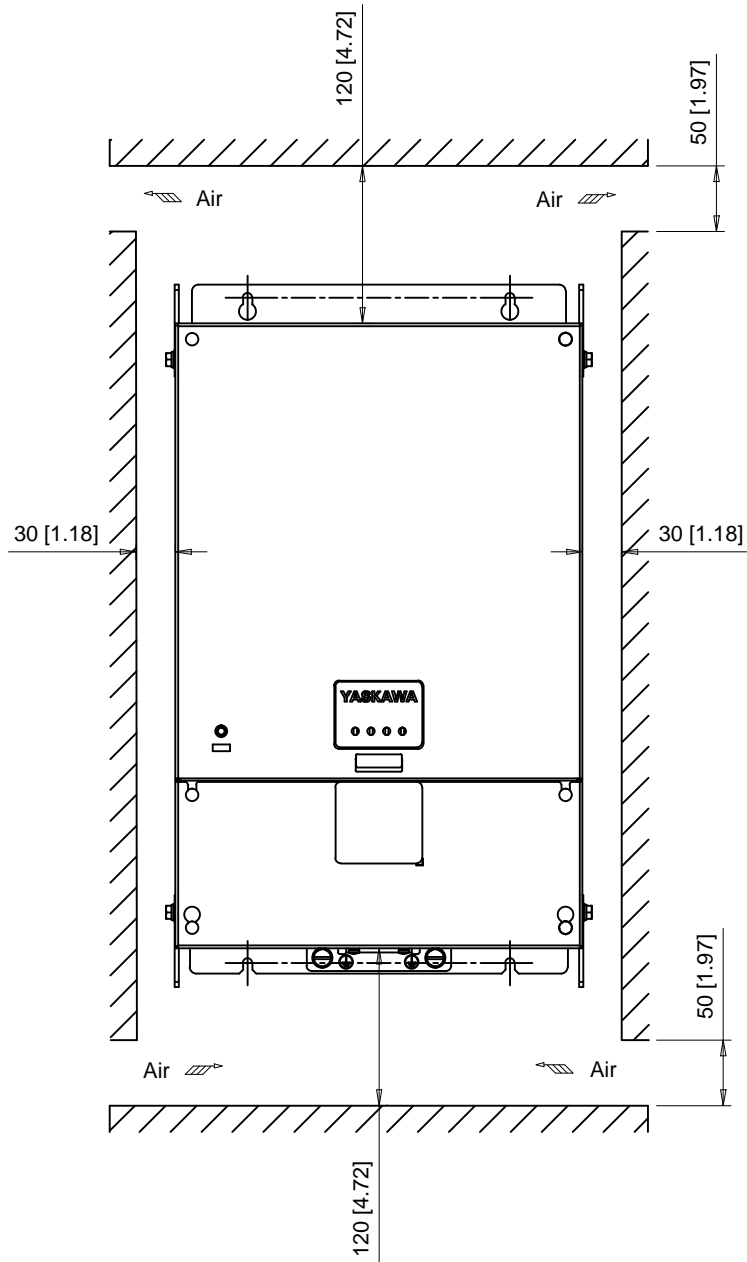
DRWN.	J. MATTAS	7-25-17
CHKD.	J. PIOTROWSKI	11-2-17
TECH.	L. UDDIN	11-14-17
APRV.	J. CAIRO	11-29-17

TITLE	SPBC DIMENSION DRAWING FRAME SIZE 2 IP00 ENCLOSURE
-------	--

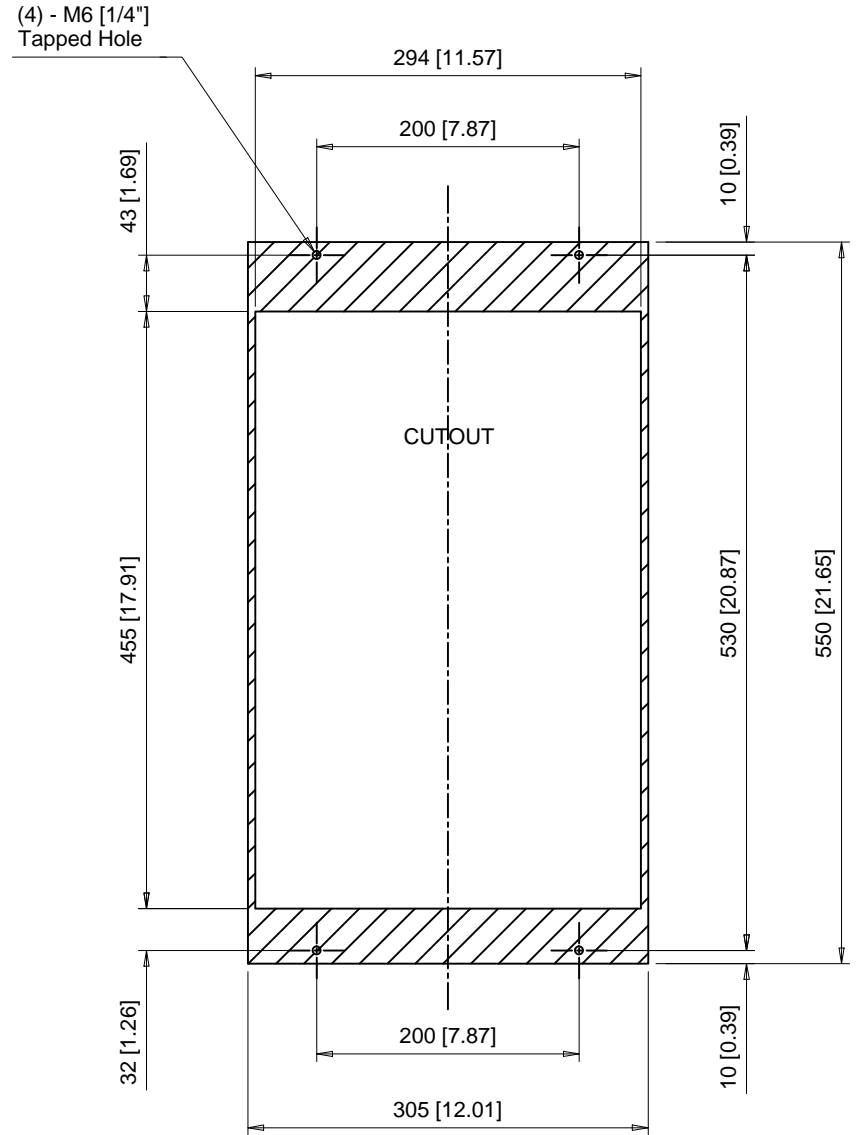
SIZE	A	PAGE	2 OF 3
DWG.NO.		DD.SPBC.FR2.IP00	

REV	0
-----	---

Minimum Installation Clearances

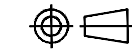


Panel Cutout
For External Heatsink Mounting Configuration



Notes:
Exposed heatsink minimum clearance D = 111 [4.37].

YASKAWA



UNITS MM [IN]

SCALE 1:6

DRWN.	J. MATTAS	7-25-17
CHKD.	J. PIOTROWSKI	11-2-17
TECH.	L. UDDIN	11-14-17
APRV.	J. CAIRO	11-29-17

TITLE
SPBC DIMENSION DRAWING
FRAME SIZE 2
IP00 ENCLOSURE

SIZE A
PAGE 3 OF 3
DWG.NO.
DD.SPBC.FR2.IP00

REV
0